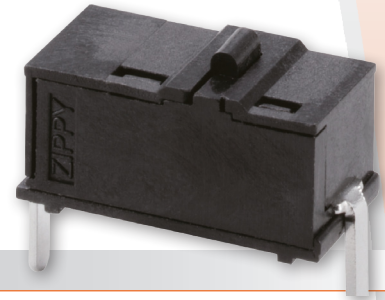


DS Series Micro Switches

herga

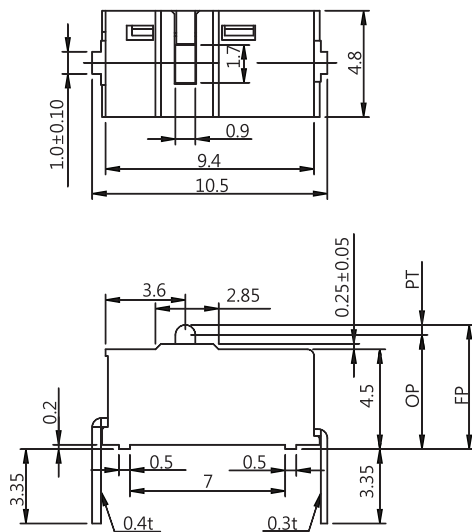
Technology Ltd

- High quality micro switches for a wide range of applications
- Excellent performance, high reliability and long service life
- UL/cUL and ENEC certification
- Applications - mouse, joystick



Reference dimensions mm

Unless otherwise specified, a tolerance of $\pm 0.4\text{mm}$ applies to all dimensions.

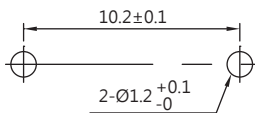


CONTACT CONFIGURATION

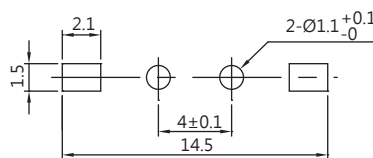


MOUNTING HOLES

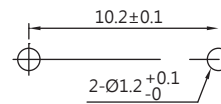
P Type Terminal



D Type Terminal



R · L Type Terminal



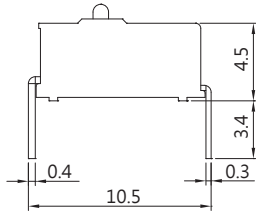
General specifications

Contact resistance (initial)	Max. 800mΩ Measured by ohm meter –Open Voltage<1VDC, Driver current -100mA
Insulation Resistance (at 500 VDC / minute)	Min. 100 MΩ
Dielectric Strength	Min. 250VAC(50-60HZ)/minute between live-parts and dead metal parts
Operating Temperature Range	-40°C to +85°C (with no icing)
Rating	0.1A 125VAC, 0.1A 48VDC , 50mA 12VDC

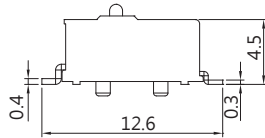
Vibration	10–55Hz, displacement 0.75 mm (p-p)
Electrical Service Life	Min. 1,000,000 operations
Electrical Operating Frequency	120 operations per minute
Mechanical Service Life	Min. 3,000,000 operations
Mechanical Operating Frequency	120 operations per minute
Operating application of the switch	Set the switch pushing distance from 60% to 90% of the specified OT value

Terminal types

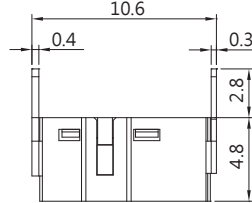
P TYPE



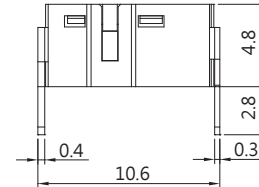
D TYPE



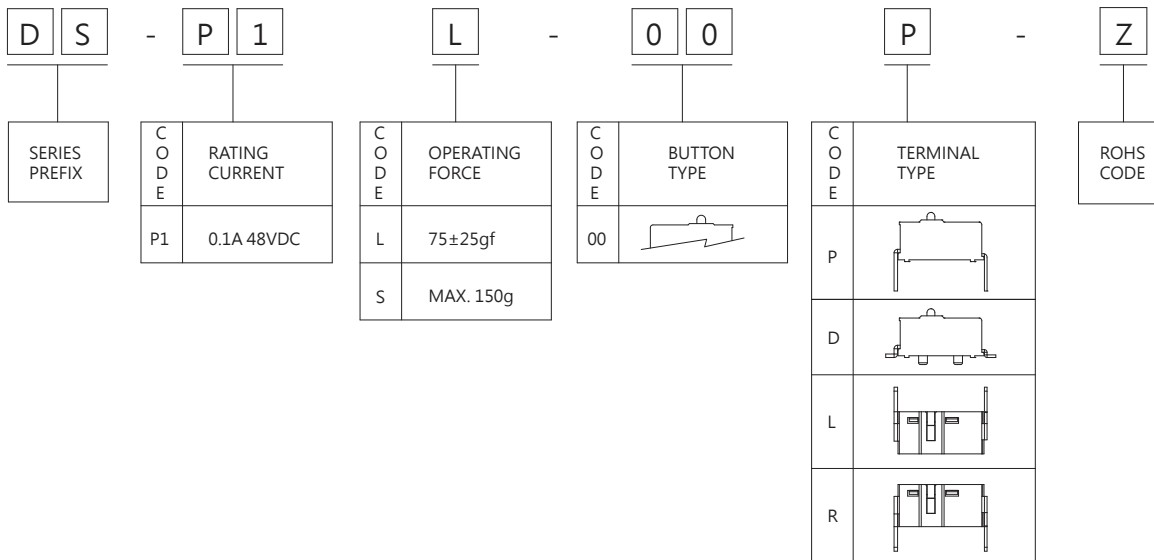
L TYPE



R TYPE



Ordering information



Operating characteristics

SWITCH TYPE	PART SUFFIX	OF (gf)	OP (mm)	PT Max. (mm)	OT Min. (mm)	MD Max. (mm)	RF Min. (gf)
DS-P1 □ -00 □ -Z		L	75±25	5.25±0.2	0.95	0.25	0.35
		S	Max.150				
							30